

Flex/Swiz workshop

Jamie Crane Klik hier om het profiel van de modelondertitel te bewerken
QNH Business Integration

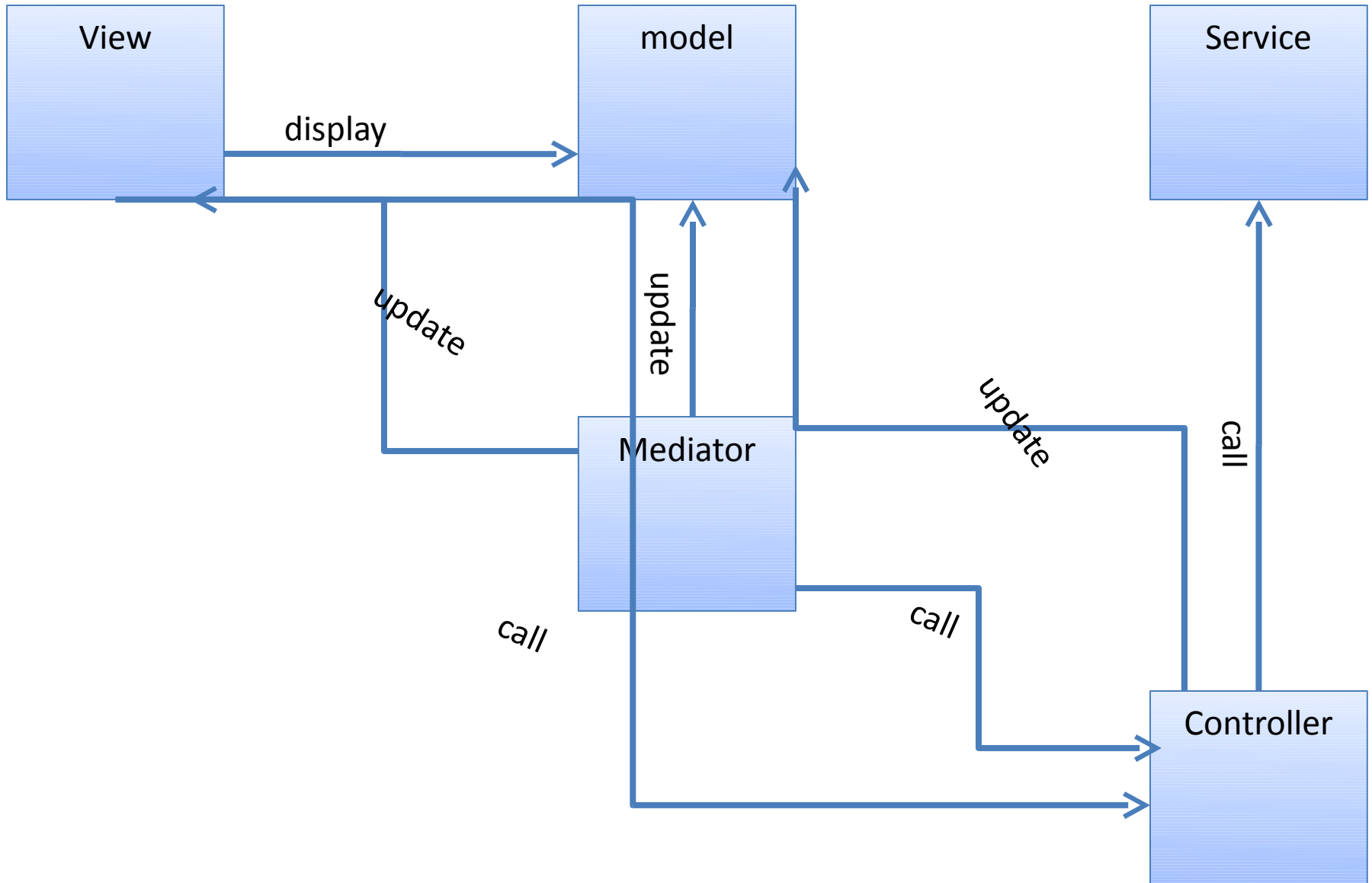
Agenda

- Preparations and introduction
- Workshop
- MVCS and Swiz

Workshop

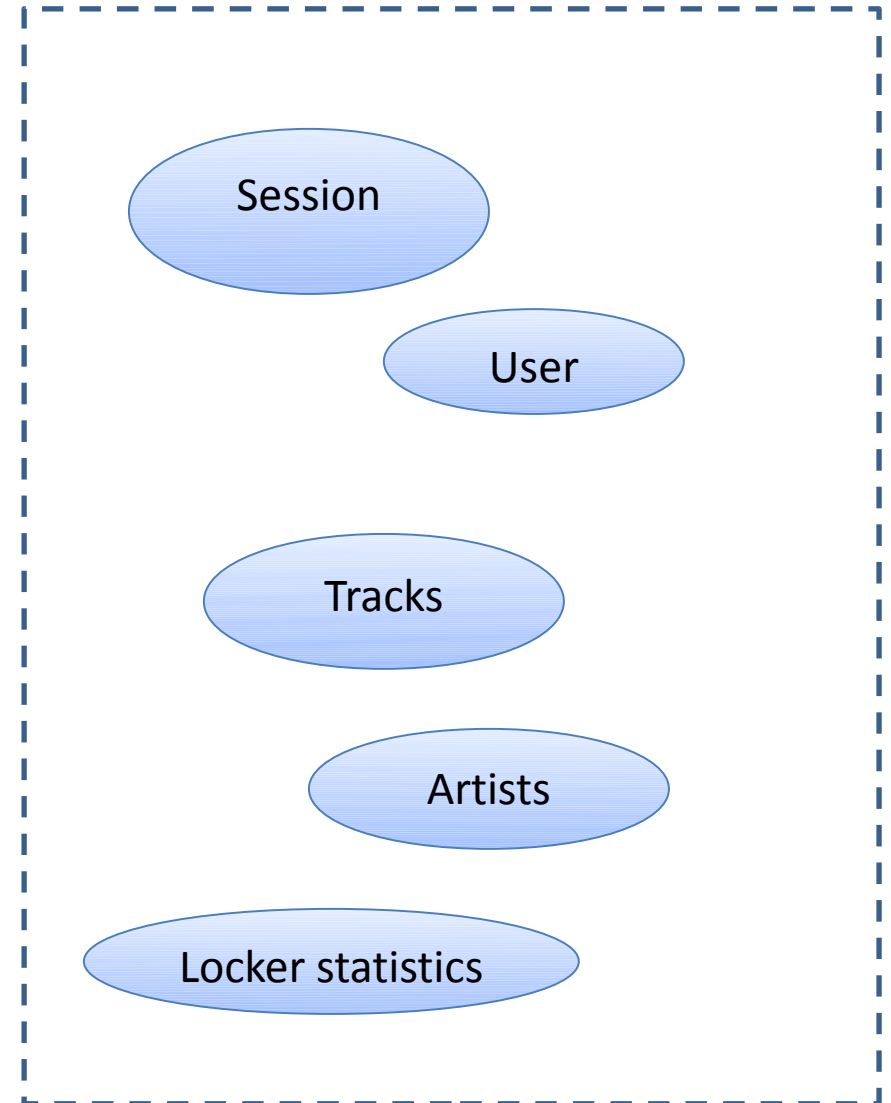
- All software on VMware image
- Workshop Guide on USB stick

Architectural pattern: MVCS(M)



The model: Representing state

- Represents client state
- [Bindable] : dispatches event on state change



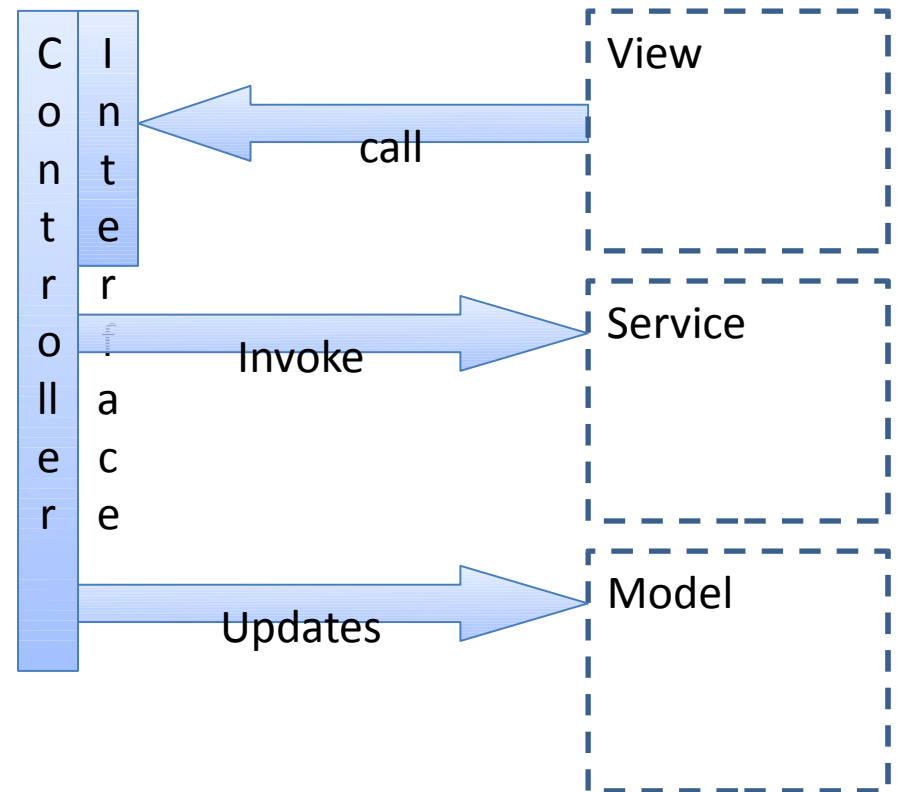
View: Presentation and interaction



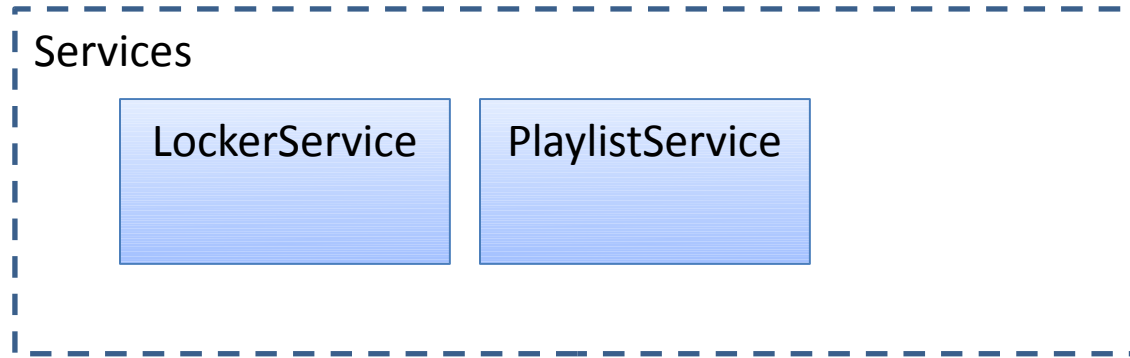
- Presents model to the user
- Responds to user actions
- Responds to model changes
- Mostly MXML

Controller: Exposing actions, invoking services

- User-initiated actions
- Invokes services
- Updates model



Services: Encapsulate remote invocations



- Service calls remote destinations
- `HttpService` or `RemoteObject`
- Returns an `AsyncToken`
- Logical place for stubs

Swiz

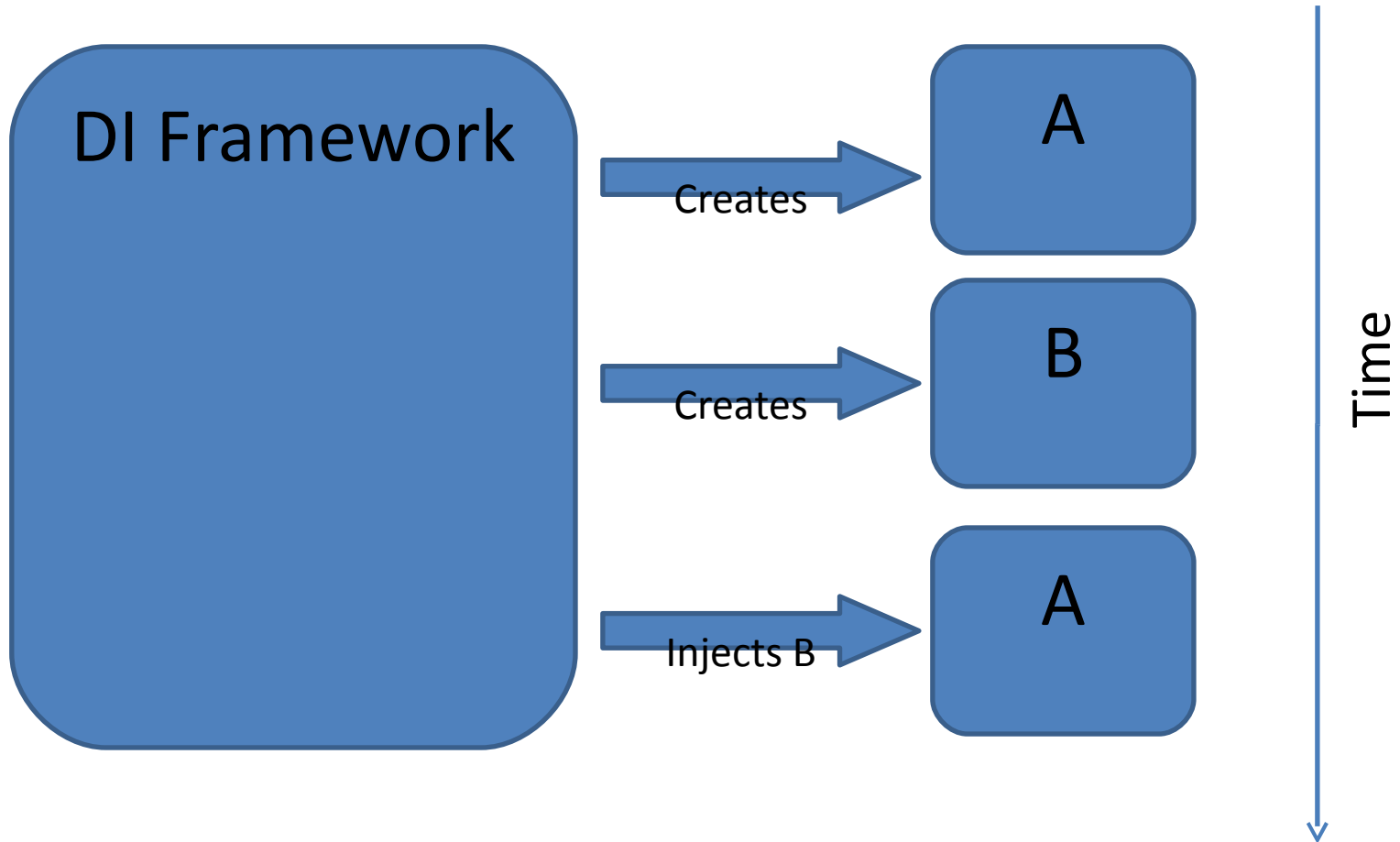


Micro architecture framework & Dependency Injection

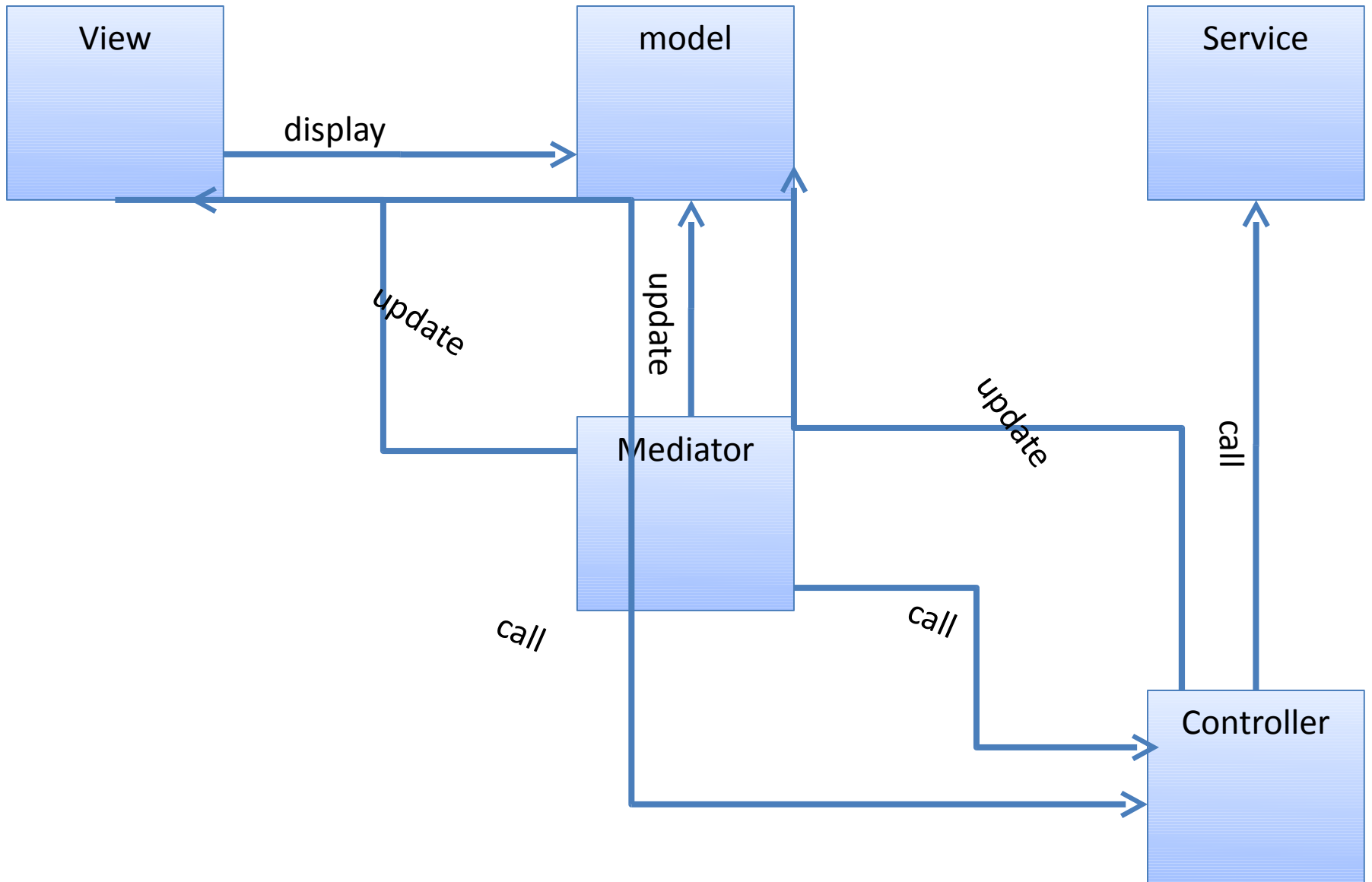
Dependency Injection



Dependency Injection



Architectural pattern: MVCS(M)



Let's code

